

20ft Shipping Container

Specification

Model:	20ft shipping container
Dimensions:	5.898m*2.352m*2.393m
Interior Dimensions:	6.058m*2.438m*2.591m
Color:	Blue
Electrical:	220V/50HZ 110V/60HZ
Tare Weight:	2,100kg
Net Weight:	28,380kg
Max. Gross Weight:	30,480kg
CU.CAP.	33.2 CU.M.
Material:	Frame: Galvanized steel Exterior wall: Cold-rolled steel Insulation: 25mm black cotton Interior wall: XPS Workbench: 304 stainless steel Floor: Non-slip aluminium checkered floor
Electrical System:	Electrical panel board Circuit breaker Power sockets SUB sockets Generator receptacles Electrical wires
Lighting:	Explosion-proof lights
Equipment:	304 stainless steel workbenches with doors Stainless steel wall cabinets Storage shelves Stainless steel storage box Toolbox Tool cart
Warranty:	1 year warranty for free

For more information on this model, such as size options, pricing, standard configurations, customization and upgrades, production time, delivery terms, etc., please email **sales@etofoodcarts.com**. Our sales agent will contact you within a day or even sooner to address any inquiries you may have.



Etodevice

Details



- Front -



- Side -



- Side -



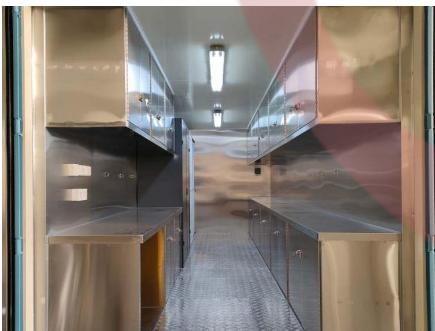
- Side -



- Door -



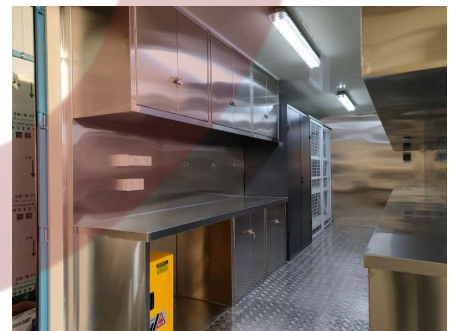
- Door -



- Interior -



- Interior -



- Interior -



- Sockets -

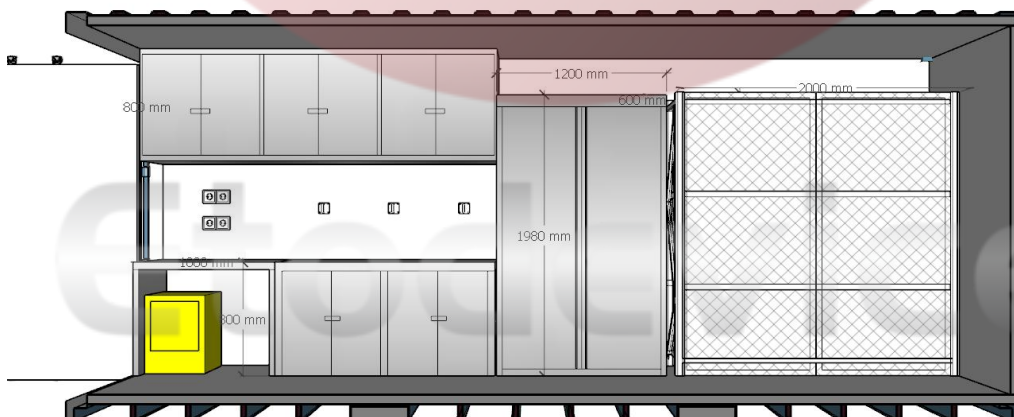
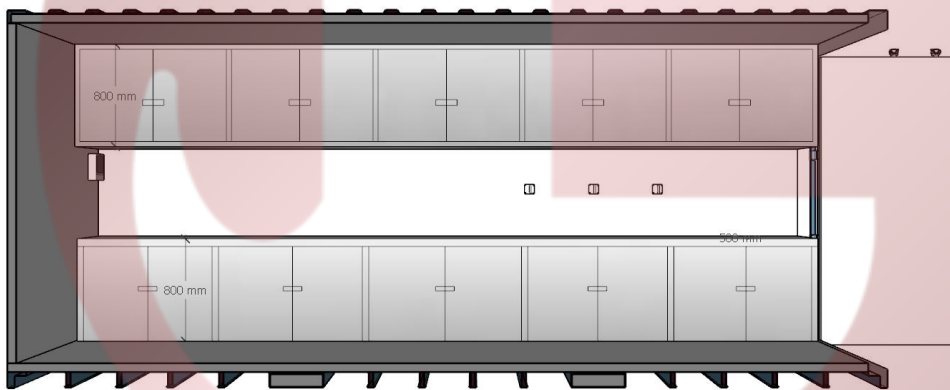
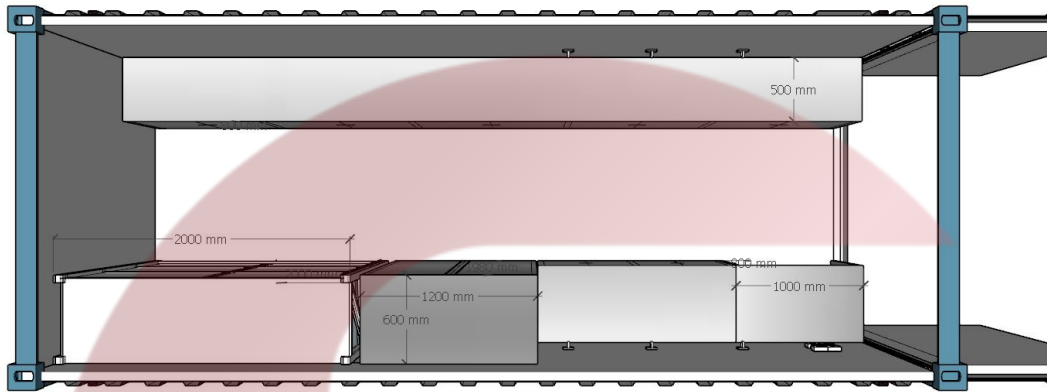


- Toolbox -



- Shelf -

Floor Plan



Design

